

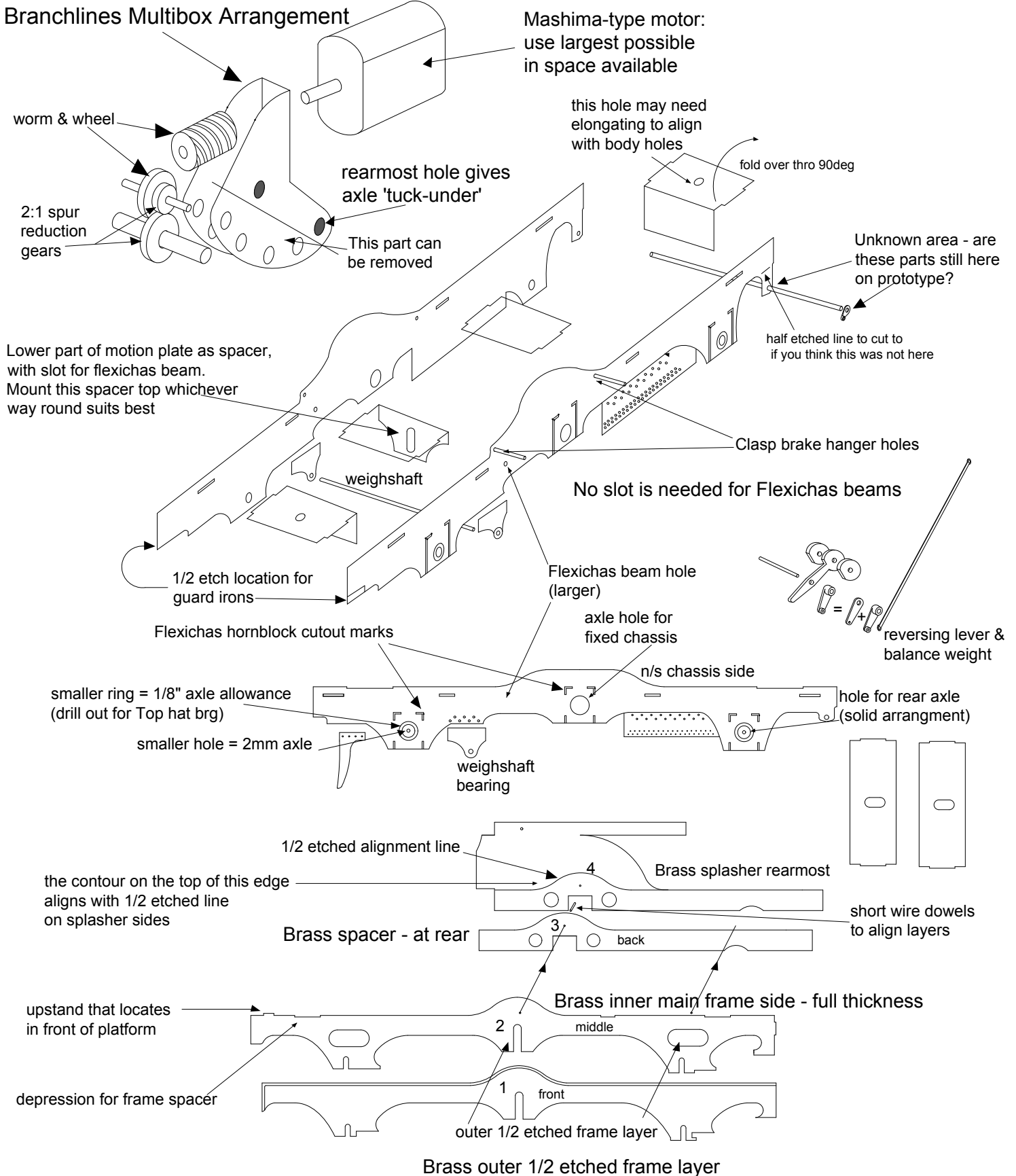
Sussex instruction Diagrams 3
CHASSIS

These diagrams should be used in conjunction with photos of your loco

NOT TO SCALE!

SUGGESTED FLEXICHAS ARRANGEMENT:

- Fixed centre axle, with rocking front axle.
- Rear axle lightly sprung.
- Front of boiler well leaded.



Note relationship between 1/2 etched frame outer layer / frame inner / chassis

