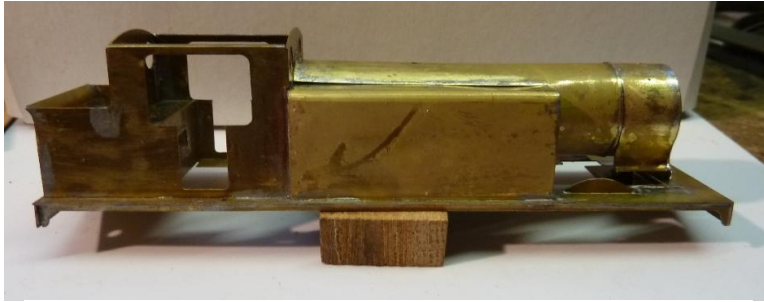


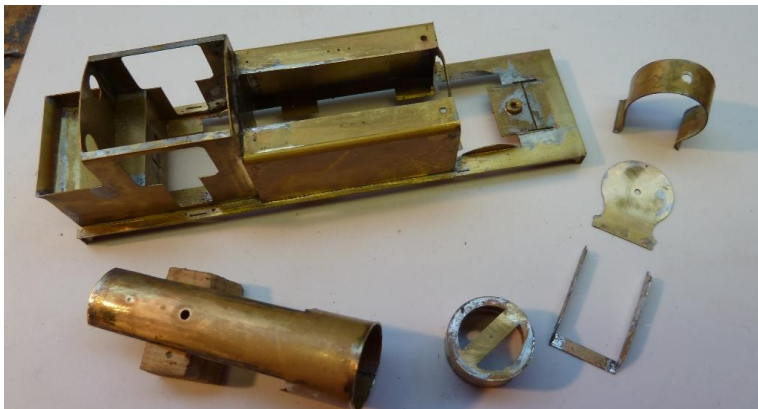
The way to rectify the mistake in the E3 construction:



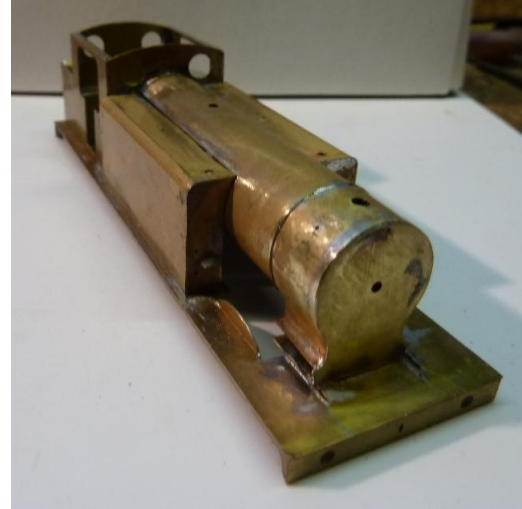
1. Boiler built as per instructions with larger smokebox



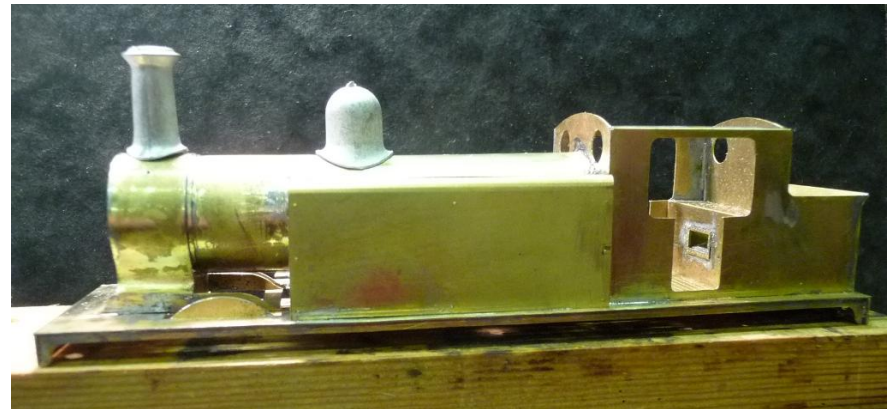
2. Boiler removed.



3. Cut off piece now rolled smaller to fit inside as a 'stub'.



4. Shape smokebox wrapper to fit exactly over the stub just inserted. Solder in place, preferably with lower melting point solder to avoid undoing the other structure around it. If done carefully, it should clean back flush. This ensures the lower flare is correctly formed as seen here.



1. After construction, cut off boiler front, leaving a truly square end.
2. Very carefully, roll the off-cut smaller and support this with the formers, or use a piece of telescopic brass tube that fits exactly *inside* the boiler left. (*from Eileen's Emporium*)
3. Formers **11a & 11b** may possibly need a slight reduction in diameter. **Check first.**
4. When satisfied all is fitting well, solder this short stub inside the boiler.
5. Form the smokebox to fit exactly over this stub and against the smokebox front plate.
6. Now slip the formed smokebox wrapper over this stub, and clean up carefully to eave a smooth transition between smokebox and boiler.
7. Ensure careful masking when spraying the green livery against the black smokebox.